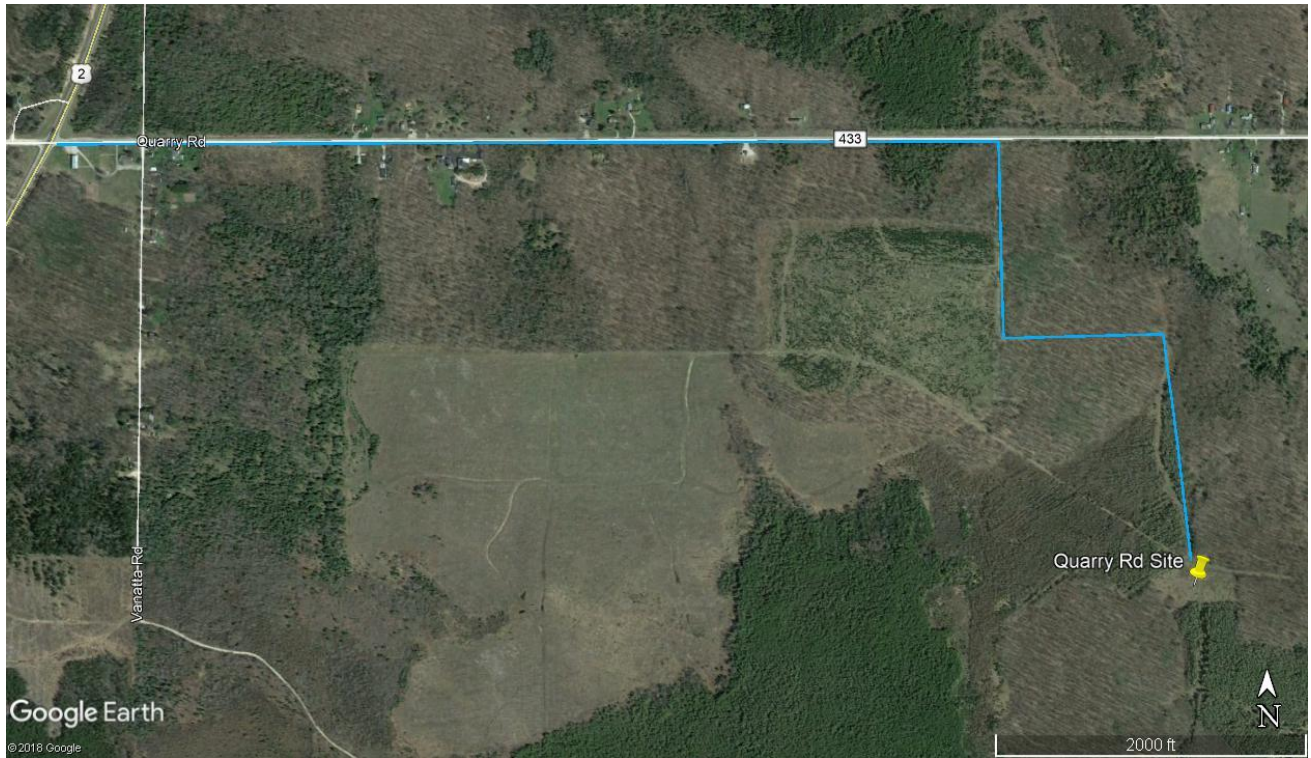


## SCD DHIPI Plot – Quarry Road



Directions to Site: From Manistique, take US-2 East to the blinking yellow light in Gulliver and continue East on US-2 an additional 5.1 miles, then turn right onto Quarry Road. Go 1.1 miles to orange-flagged 2-track road on the right. Turn right onto this and follow this for 0.25 miles, then turn left. Follow this until you reach the 2+ acre site.

Google Earth GPS Coordinates:

~46.048783, -85.931656

Information: This plot was established in 2017. The site was cleared, tilled, limed and fertilized before being planted to a mix of clovers and grasses. It has been mowed annually in July beginning in 2018. Also, supplemental trees and shrubs have been planted along one edge, with some survival of plants which will provide mast within a few years.

Size: This plot is about 2.2 acres in size.