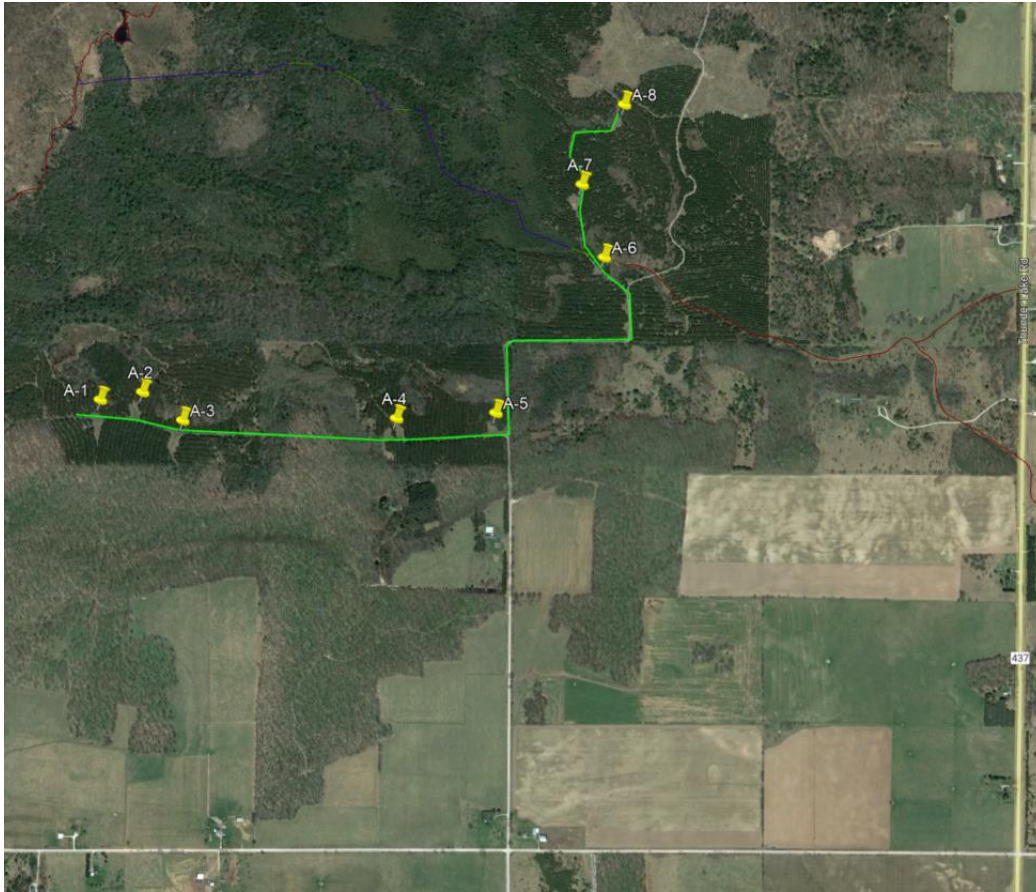


SCD DHIPI Plots – Inwood Township



Directions to Site Area: From Manistique, take CR-432 West ~7.0 miles beyond the entrance to Indian Lake State Park, to where the road turns South. Turn right at this intersection and go North on Poupour Rd and then Fox Road a total of 1.7 miles to a gate. Continue through this gate and go down the hill and go left (West). Follow this road ~0.8 miles to plot 1 on the left (you will pass plots 5, 4, 3, and 2 prior to that). To reach plots 6-8, return to the N-S road you came in on near Plot 5, and turn Left (North). Follow this ~1.0 miles (bearing to the left at any junctions), passing plots 6 and 7 before reaching plot 8 on the right; this plot was not tilled, but merely had supplemented trees and shrubs planted and fenced.

Google Earth GPS Coordinates:

E-W line of 5 plots (plots A-1 through A-5): ~45.981313 N, range of -86.485826 to -86.469487 W

N-S line of 3 plots (plots A-6 through A-8): range of ~45.983588 to 45.9901778, -86.465284 W

Information: The plots were established in 2019 and were worked up and planted to a mix of clovers and grasses after lime and fertilizer were incorporated. Supplemental trees and shrubs were planted in May 2020 and fenced to protect them from deer. One apple tree on one of the plots produced an apple that first fall. Annual mowing of plots was done in July of each year 2020-2022. In 2020 and 2021 competing vegetation was clipped or removed within the fenced enclosures. This was not accomplished in 2022.

Size: Plots 1-7 range in size from 0.1 to 0.38 acres.